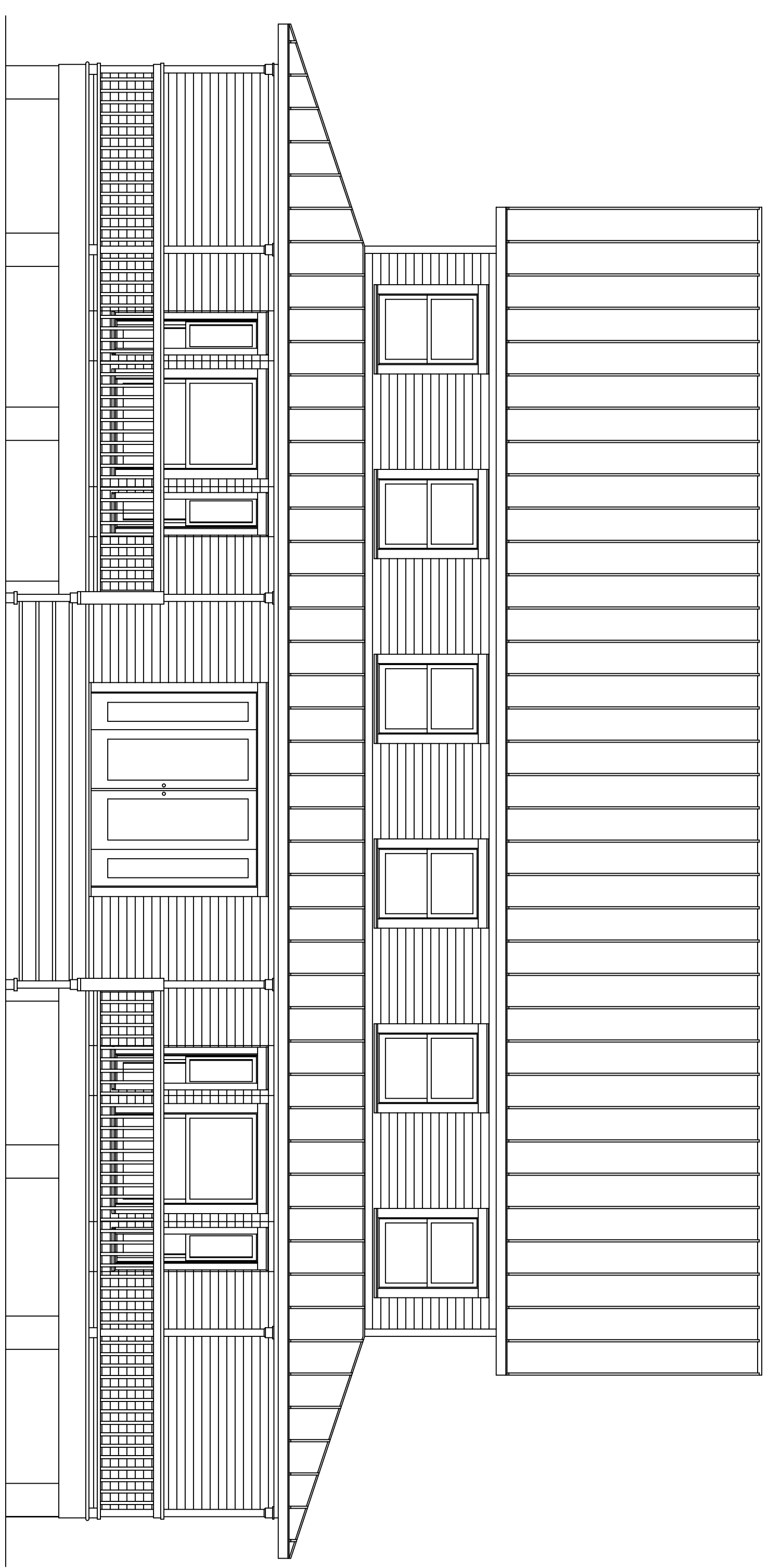


SIDE (SOUTH) ELEVATION

SCALE: 1/4"=1'-0"



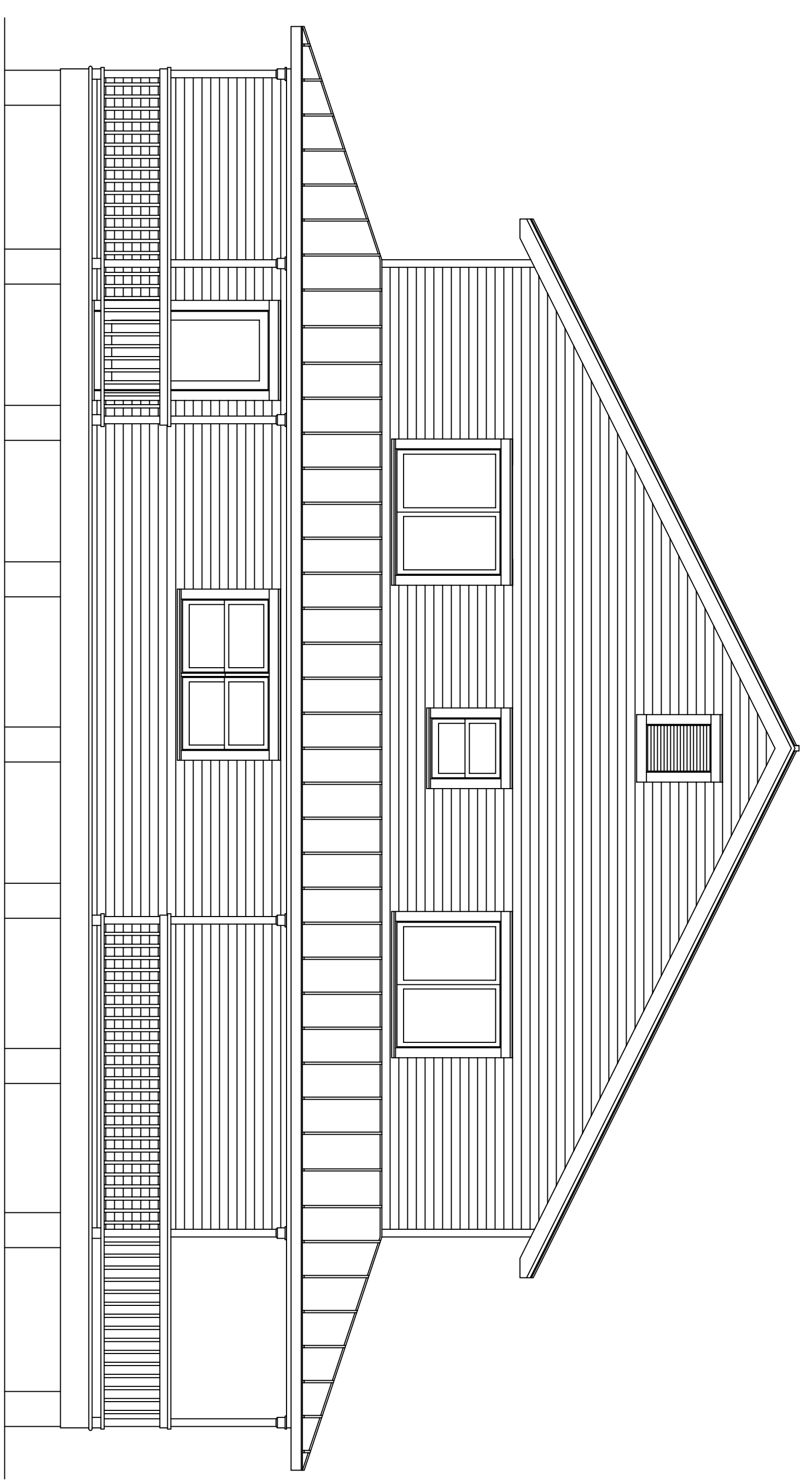
REAR (WEST) ELEVATION

SCALE: 1/4"=1'-0"



FRONT (EAST) ELEVATION

SCALE: 1/4"=1'-0"



SIDE (NORTH) ELEVATION

SCALE: 1/4"=1'-0"